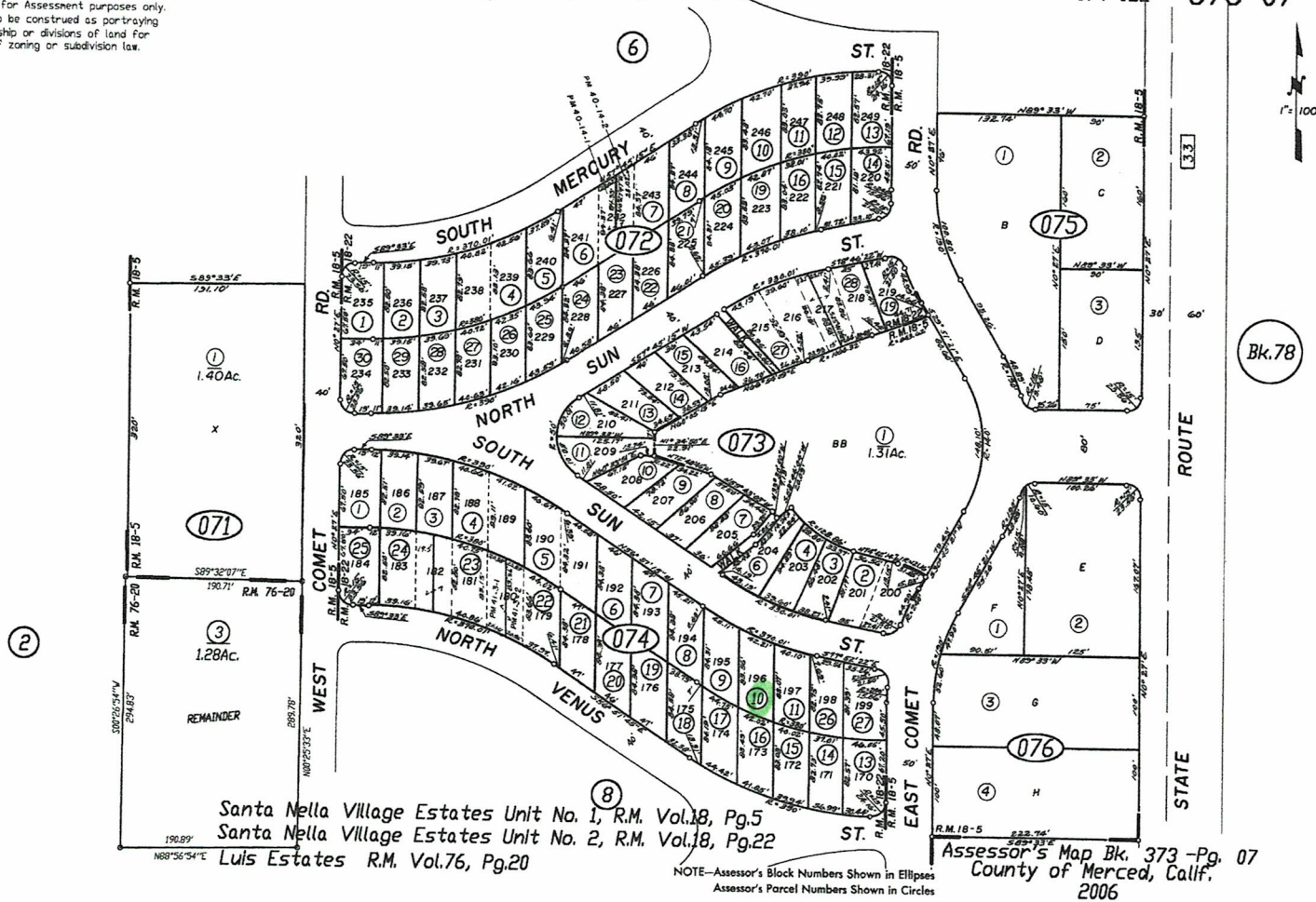


- NOTE -
This map is for Assessment purposes only.
It is not to be construed as portraying
legal ownership or divisions of land for
purposes of zoning or subdivision law.

Tax Rate Area 074-022

373-07



DRAWN 12-06
REVISED 04-07
07-10-09

Santa Nella Village Estates Unit No. 1, R.M. Vol.18, Pg.5
 Santa Nella Village Estates Unit No. 2, R.M. Vol.18, Pg.22
 Luis Estates R.M. Vol.76, Pg.20

NOTE—Assessor's Block Numbers Shown in Ellipses
Assessor's Parcel Numbers Shown in Circles

Assessor's Map Bk. 373 -Pg. 07
County of Merced, Calif.
2006